




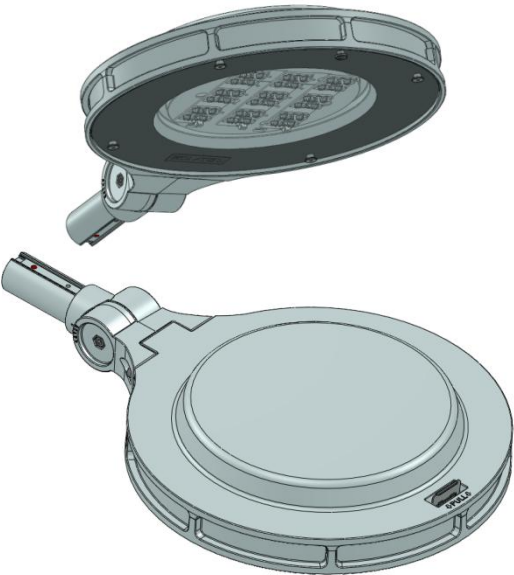
**IP66**






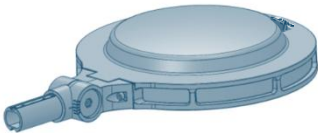
**RoHS**

**220-240V 50-60Hz**

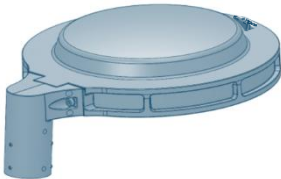


|        | IK |  | SCx                  | Hmax |
|--------|----|--|----------------------|------|
| TEO 45 | 09 | 8,6 kg   | 0,038 m <sup>2</sup> | 12m  |
| TEO 55 | 08 | 10,7kg   | 0,042 m <sup>2</sup> |      |

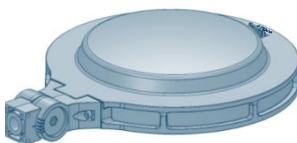
LRL



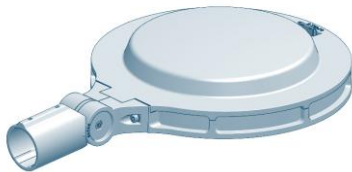
TOP



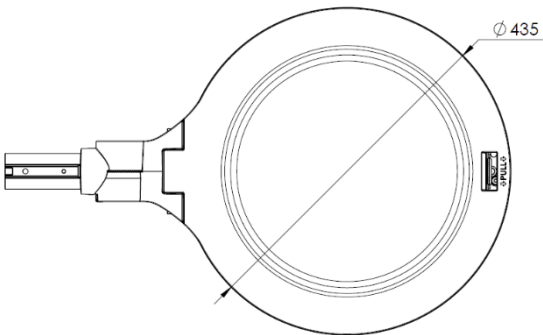
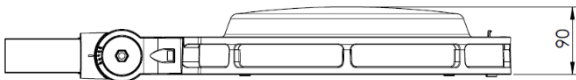
LR



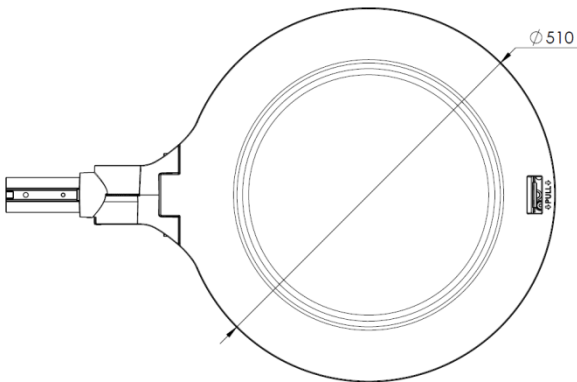
LRM60



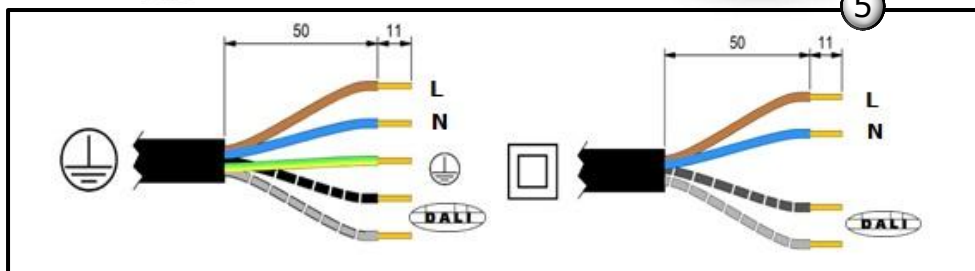
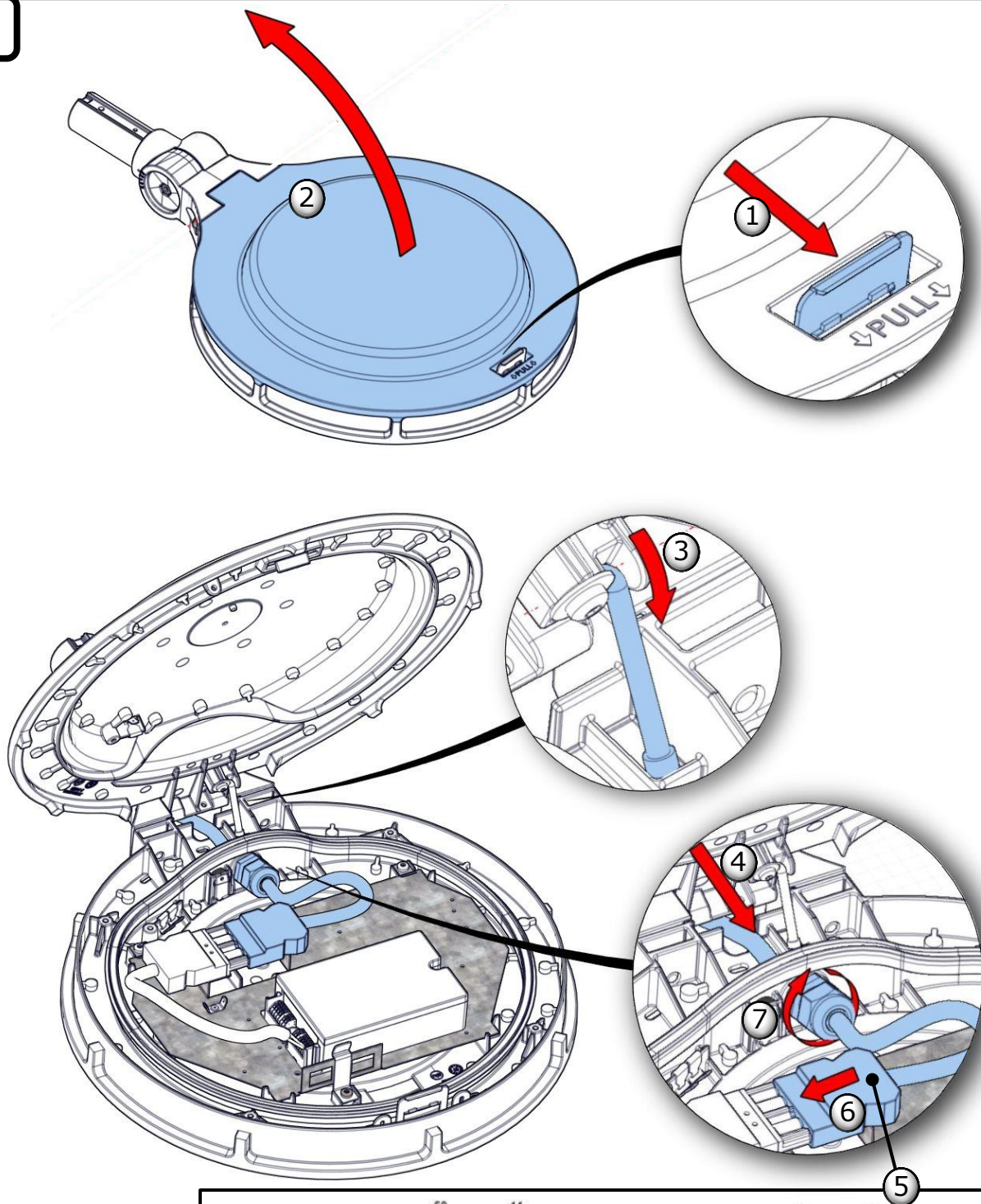
TEO 45 X



TEO 55 X

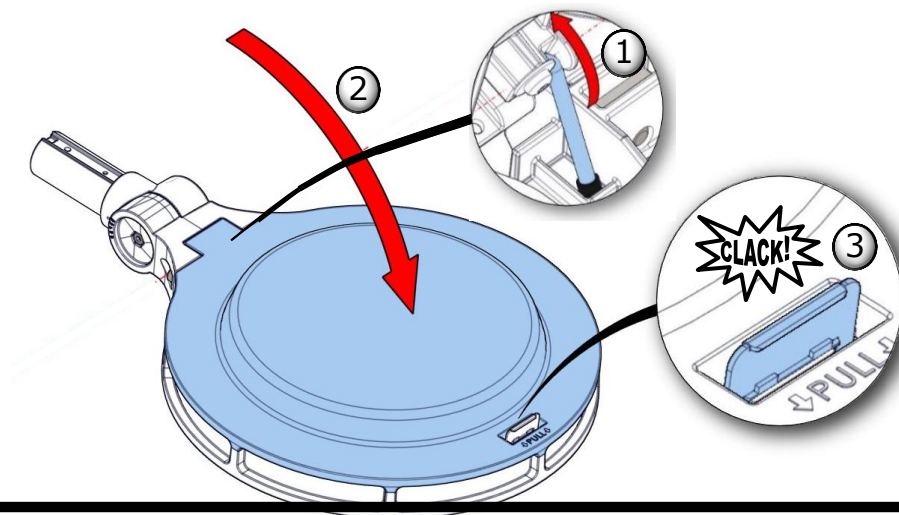


# 1.1



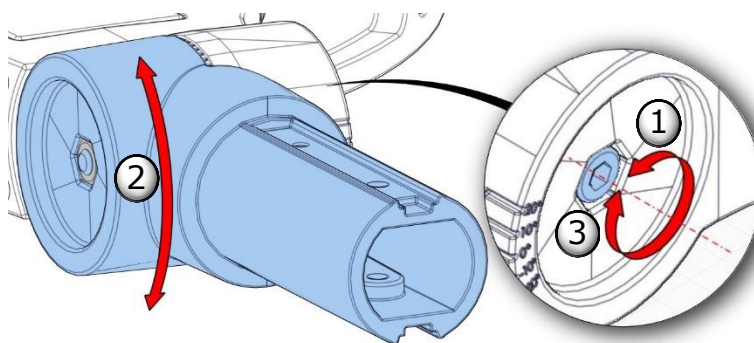
La source lumineuse contenue dans ce luminaire ne doit être remplacée que par le fabricant ou son agent de maintenance ou une personne de qualification équivalente.  
 The lighting part included in this luminaire must be maintained by the manufacturer, an authorized service agent or a person with similar technical qualification.  
 Die in der Leuchte beinhaltene Lichtquelle soll nur durch den Hersteller oder seinen Wartungsfachmann oder einen Servicetechniker mit einer ähnlichen Qualifikation ersetzt werden.

1.2



1.3

6

12 N.m  $\pm$  1

1.4

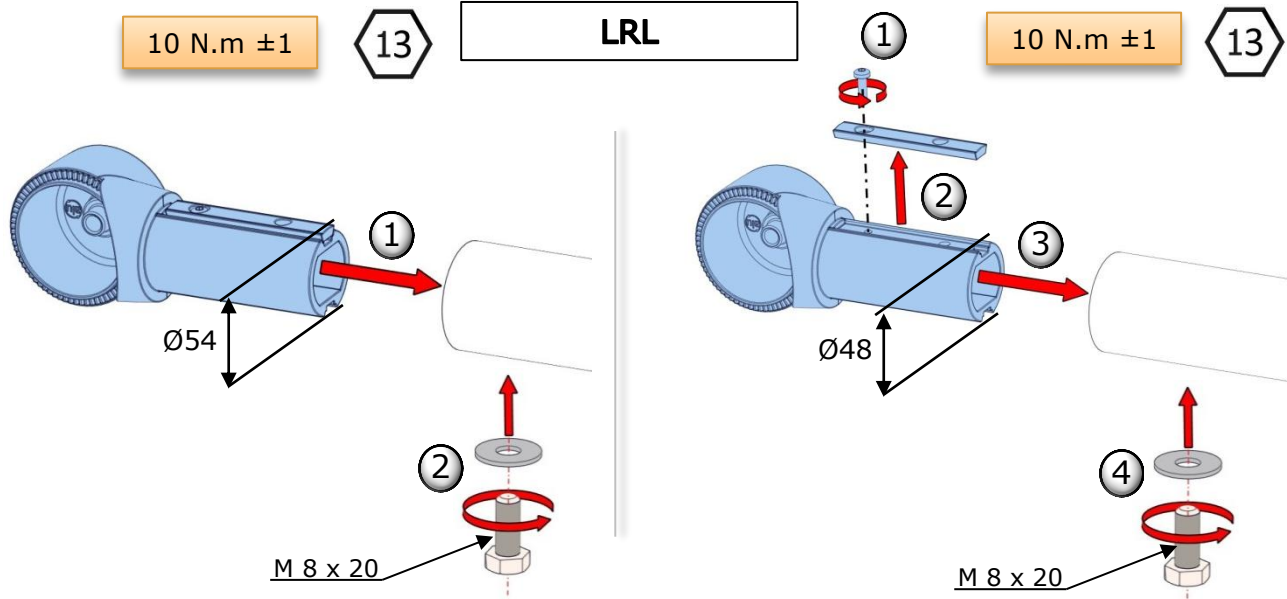
10 N.m  $\pm$  1

13

LRL

10 N.m  $\pm$  1

13

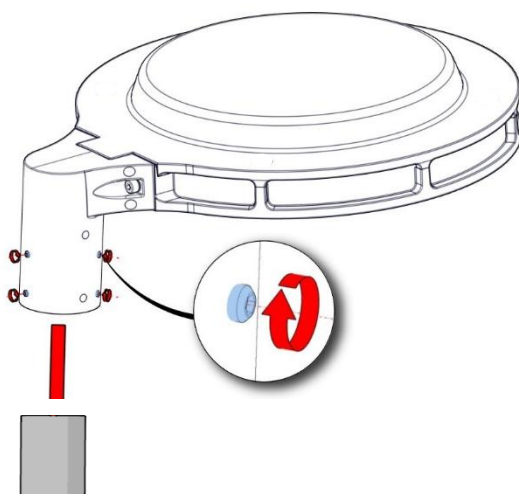


La source lumineuse contenue dans ce luminaire ne doit être remplacée que par le fabricant ou son agent de maintenance ou une personne de qualification équivalente.  
 The lighting part included in this luminaire must be maintained by the manufacturer, an authorized service agent or a person with similar technical qualification.  
 Die in der Leuchte beinhaltene Lichtquelle soll nur durch den Hersteller oder seinen Wartungsfachmann oder einen Servicetechniker mit einer ähnlichen Qualifikation ersetzt werden.



1.5

TOP

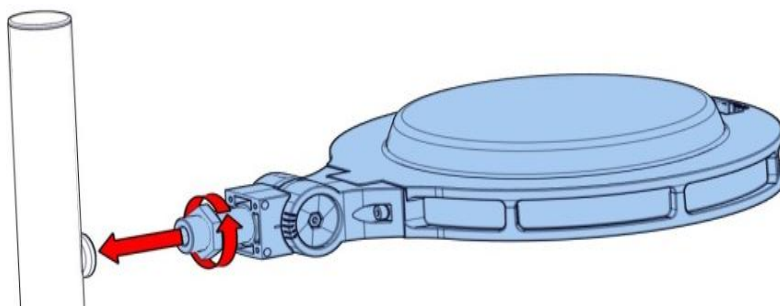
4N.m  $\pm$  1

6x

3

1.6

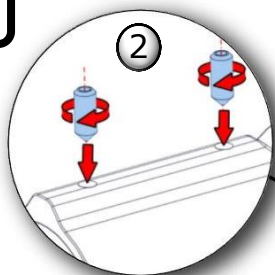
LR

50 N.m  $\pm$  1

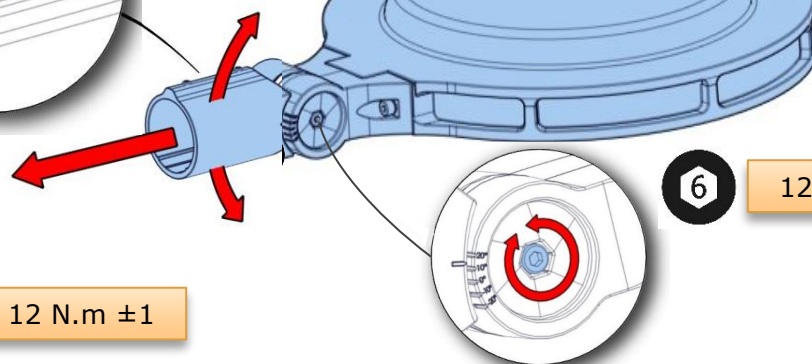
46

1.7

LRM 60



2



6

12 N.m  $\pm$  1

2x

4

12 N.m  $\pm$  1

## Autres notices et modes opérateurs

La source lumineuse contenue dans ce luminaire ne doit être remplacée que par le fabricant ou son agent de maintenance ou une personne de qualification équivalente.  
 The lighting part included in this luminaire must be maintained by the manufacturer, an authorized service agent or a person with similar technical qualification.  
 Die in der Leuchte beinhaltene Lichtquelle soll nur durch den Hersteller oder seinen Wartungsfachmann oder einen Servicetechniker mit einer ähnlichen Qualifikation ersetzt werden.

4